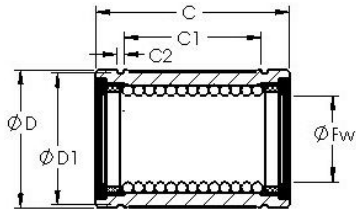


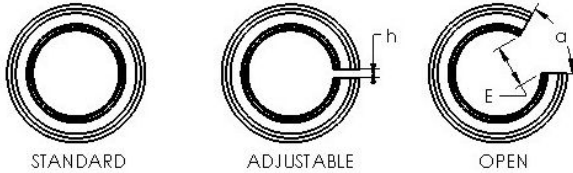


BEARING CORP.OF AMERICA



AST LBE 40 OP linear bearings

Bearing No. LBE 40 OP



Bore Diameter	40 mm
Bearing Type	open type
Dynamic Load Rating (Cr)	2,710
Static Load Rating (Cor)	4,890
Shaft Dia. (Fw)	40.000
Outside Dia. (D)	62.000
Length (C)	80.000
Groove-to-groove length (C1)	56.000
Groove Width (C2)	2.100
Groove Dia. (D1)	59.000
Open Gap (E)	16.800
Open Gap (a deg.)	50.00
Weight (g)	480.00
Material	52100 chrome steel, or equivalent

LBE 40 OP Bearing 2D drawings and 3D CAD models